

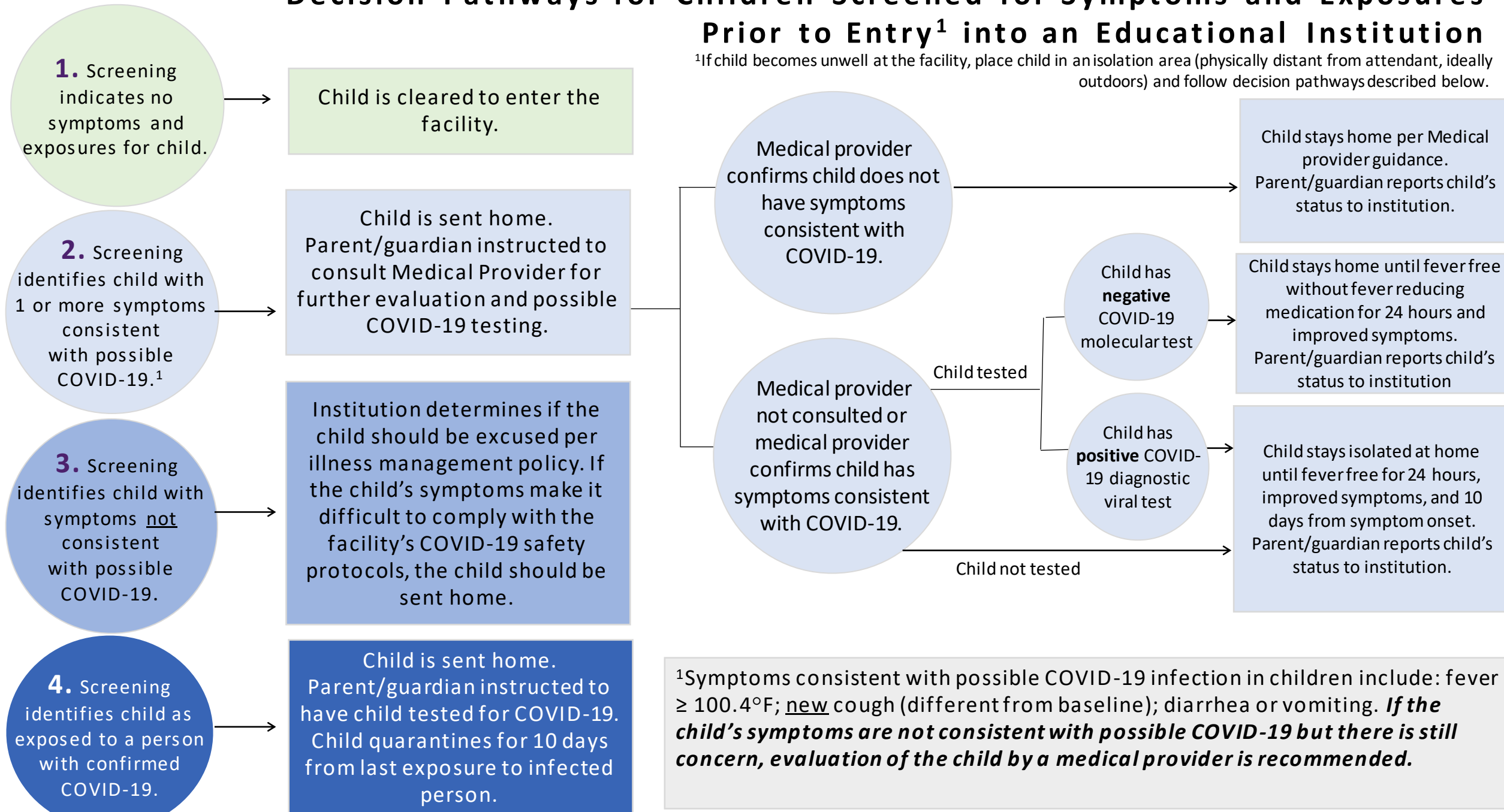
Screening and Exposure Decision Pathways for Symptomatic Persons and Contacts of Potentially Infected Persons at Educational Institutions

*Los Angeles County Department of Public Health
Updated: 3/11/2021*

Screening and Exposure Decision Pathways for
Children **at an Educational Institution and Their Close Contacts at the Facility**

Decision Pathways for Children Screened for Symptoms and Exposures Prior to Entry¹ into an Educational Institution

¹If child becomes unwell at the facility, place child in an isolation area (physically distant from attendant, ideally outdoors) and follow decision pathways described below.

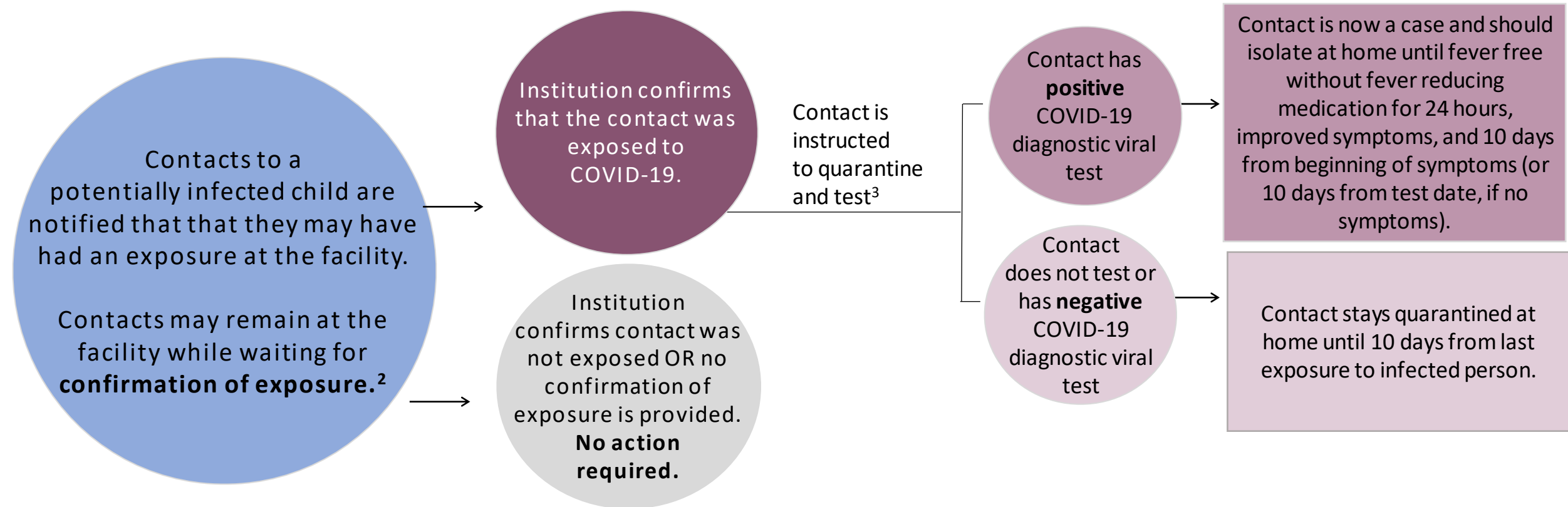


¹Symptoms consistent with possible COVID-19 infection in children include: fever $\geq 100.4^{\circ}\text{F}$; new cough (different from baseline); diarrhea or vomiting. ***If the child's symptoms are not consistent with possible COVID-19 but there is still concern, evaluation of the child by a medical provider is recommended.***

Decision Pathways for Contacts to a Potentially Infected Child¹ at an Educational Institution

¹A **potentially infected child** is a child with ≥ 1 symptoms consistent with possible COVID-19. Symptoms include fever $\geq 100.4^{\circ}\text{F}$; new cough (different from baseline); diarrhea or vomiting.

A **close contact of a potentially infected child** is a child or employee at the facility who was within 6 feet for ≥ 15 minutes over a 24-hour period with a potentially infected child OR had direct contact with bodily fluids/secretions from a potentially infected child.



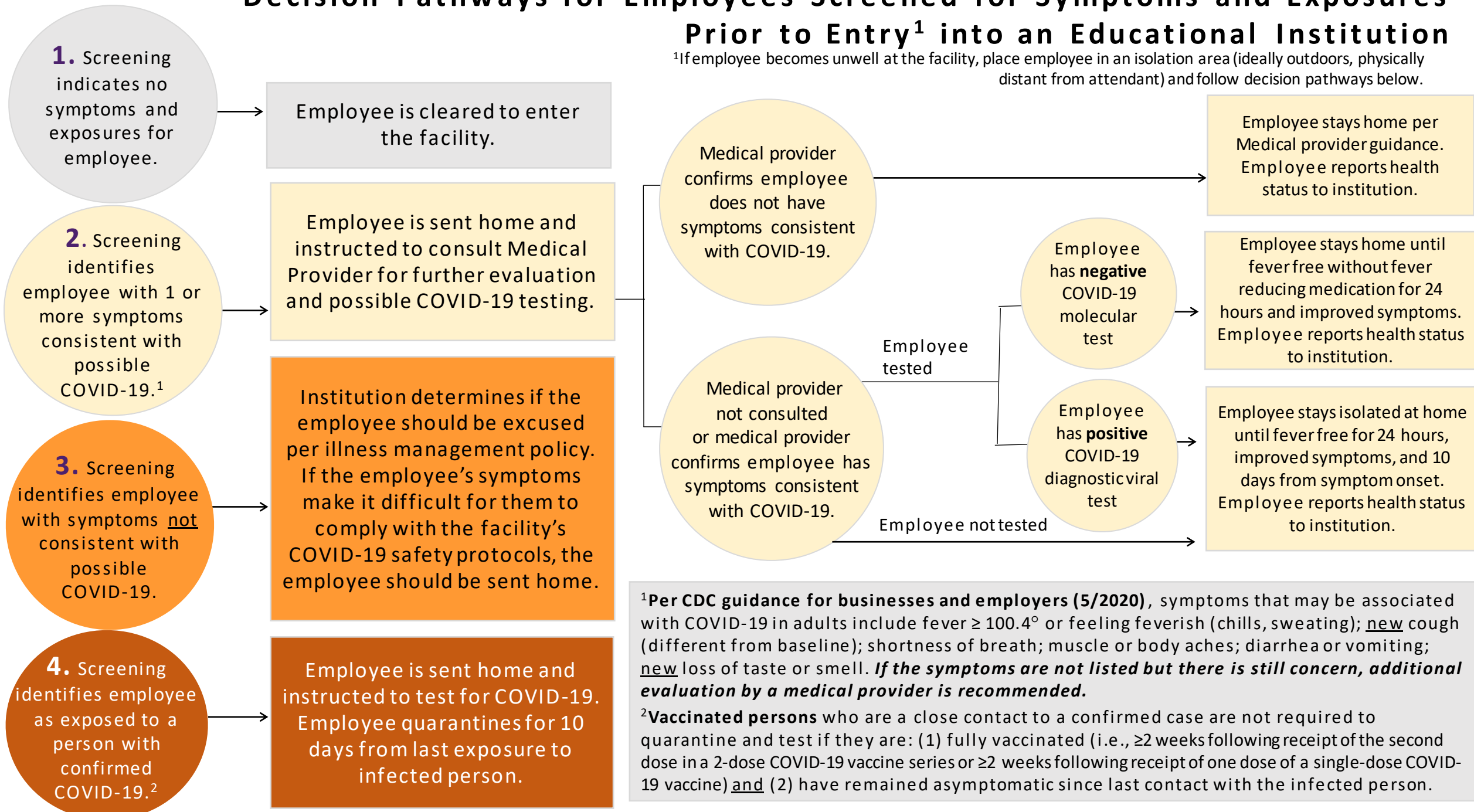
²**Exposure is confirmed** for a close contact to a potentially infected employee if the Institution receives notification that the potentially infected employee had a positive COVID-19 diagnostic viral test OR received a diagnosis of COVID-19 from a medical provider.

³**Vaccinated persons** who are a close contact to a confirmed case are not required to quarantine and test if they are: (1) fully vaccinated (i.e., ≥ 2 weeks following receipt of the second dose in a 2-dose COVID-19 vaccine series or ≥ 2 weeks following receipt of one dose of a single-dose COVID-19 vaccine) and (2) have remained asymptomatic since last contact with the infected person.

Screening and Exposure Decision Pathways for
Employees **at an Educational Institution and Their Close Contacts at the**
Facility

Decision Pathways for Employees Screened for Symptoms and Exposures Prior to Entry¹ into an Educational Institution

¹If employee becomes unwell at the facility, place employee in an isolation area (ideally outdoors, physically distant from attendant) and follow decision pathways below.

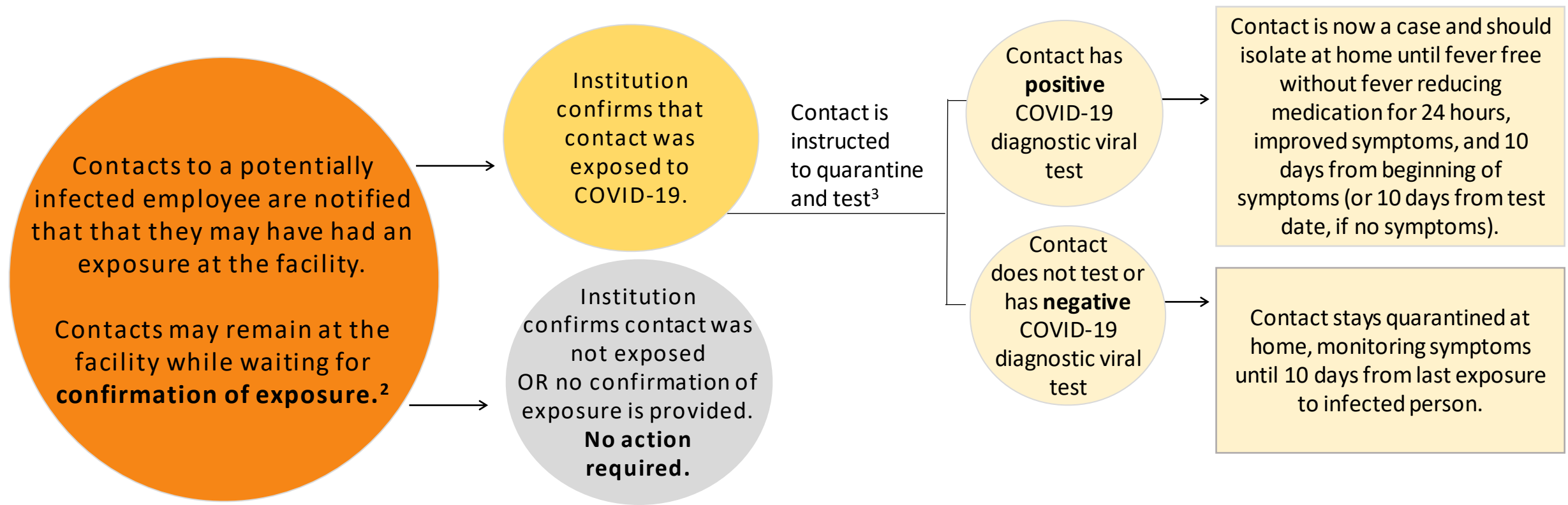


¹Per CDC guidance for businesses and employers (5/2020), symptoms that may be associated with COVID-19 in adults include fever $\geq 100.4^{\circ}$ or feeling feverish (chills, sweating); new cough (different from baseline); shortness of breath; muscle or body aches; diarrhea or vomiting; new loss of taste or smell. ***If the symptoms are not listed but there is still concern, additional evaluation by a medical provider is recommended.***

²**Vaccinated persons** who are a close contact to a confirmed case are not required to quarantine and test if they are: (1) fully vaccinated (i.e., ≥ 2 weeks following receipt of the second dose in a 2-dose COVID-19 vaccine series or ≥ 2 weeks following receipt of one dose of a single-dose COVID-19 vaccine) and (2) have remained asymptomatic since last contact with the infected person.

Decision Pathways for Contacts to a Potentially Infected Employee¹ at an Educational Institution

¹A **potentially infected employee** is an employee with ≥ 1 symptoms consistent with possible COVID-19. Symptoms include fever $\geq 100.4^\circ$ or feeling feverish (chills, sweating); new cough (different from baseline); shortness of breath; muscle or body aches; diarrhea or vomiting; new loss of taste or smell. A **close contact of a potentially infected employee** is a child or employee at the facility who was within 6 feet for ≥ 15 minutes over a 24-hour period with a potentially infected employee OR had direct contact with bodily fluids/secretions from a potentially infected employee.



²**Exposure is confirmed** for a close contact to a potentially infected employee if the Institution receives notification that the potentially infected employee had a positive COVID-19 diagnostic viral test OR received a diagnosis of COVID-19 from a medical provider.

³**Vaccinated persons** who are a close contact to a confirmed case are not required to quarantine and test if they are: (1) fully vaccinated (i.e., ≥ 2 weeks following receipt of the second dose in a 2-dose COVID-19 vaccine series or ≥ 2 weeks following receipt of one dose of a single-dose COVID-19 vaccine) and (2) have remained asymptomatic since last contact with the infected person.

Decision Pathways for
Children or Employees with Laboratory-Confirmed COVID-19
at an Educational Institution and Their Close Contacts at the Facility

Guidance for Child or Employee with Laboratory-confirmed COVID-19 at an Educational Institution

Educational Institution is notified of a child or employee with laboratory-confirmed COVID-19.

Child or employee with laboratory-confirmed COVID-19 is sent home.

Child or employee with laboratory-confirmed COVID-19 is instructed to isolate at home, away from others.¹

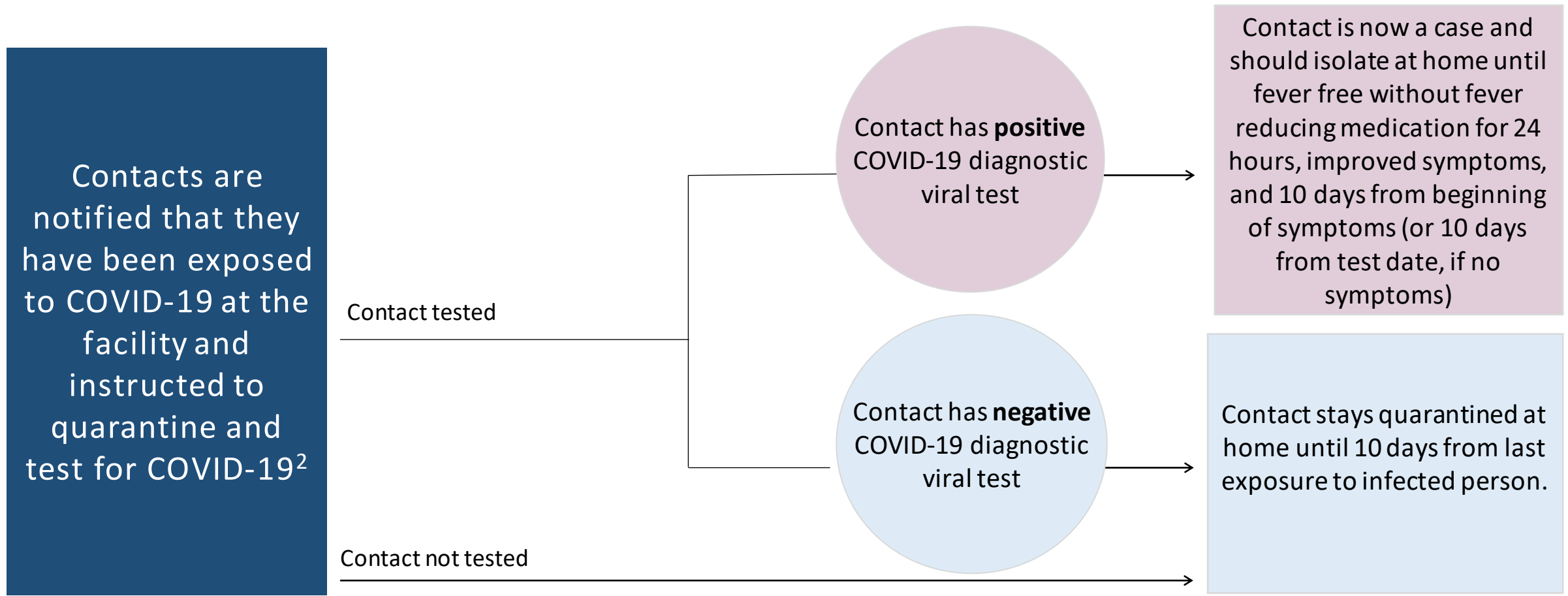
Institution identifies exposed contacts to child or employee with laboratory-confirmed COVID-19 while infectious² and notifies contacts of exposure.

¹ Persons with laboratory-confirmed COVID-19 should isolate until fever free for 24 hours without fever reducing medication, improved symptoms, and 10 days from beginning of symptoms (or 10 days from test date, if no symptoms).

²The infectious period for an infected person is 48 hours before symptom onset (or test date for persons with no symptoms) until the infected person is no longer required to be isolated.

Decision Pathways for Contacts¹ to a Child or Employee with Laboratory-confirmed COVID-19 at an Educational Institution.

¹A close contact to a child or employee with laboratory-confirmed COVID-19 is a child or employee at the facility that was within 6 feet for ≥ 15 minutes over a 24-hour period with the infected person OR had unprotected direct contact with bodily fluids/secretions from the infected person.



²Vaccinated persons who are a close contact to a confirmed case are not required to quarantine and test if they are: (1) fully vaccinated (i.e., ≥ 2 weeks following receipt of the second dose in a 2-dose COVID-19 vaccine series or ≥ 2 weeks following receipt of one dose of a single-dose COVID-19 vaccine) and (2) have remained asymptomatic since last contact with the infected person.